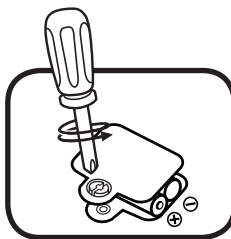


Toot-Toot Drivers®

Cargo Train

BATTERY INSTALLATION

1. Make sure the unit is turned **OFF**.
2. Locate the battery cover on the bottom of the vehicle. Use a coin or a screwdriver to loosen the screw and then open the battery cover.
3. If used or spent batteries are present, remove these batteries from the unit by pulling up on one end of each battery.
4. Install 2 new AAA (AM-4/LR03) batteries following the diagram inside the battery box. (For best performance, alkaline batteries or fully charged Ni-MH rechargeable batteries are recommended.)
5. Replace the battery cover and tighten the screw to secure.



WARNING:

Adult assembly required for battery installation.

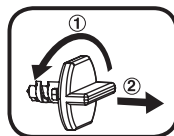
Keep batteries out of reach of children.

WARNING: All packing materials such as tape, plastic sheets, packaging locks, removable tags, cable ties, cords and packaging screws are not part of this toy and should be discarded for your child's safety.

NOTE: Please keep this Instruction Manual as it contains important information.

Unlock the packaging locks:

- ① Turn the packaging lock anticlockwise several times.
- ② Pull out and discard the packaging lock.



IMPORTANT: BATTERY INFORMATION

- Insert batteries with the correct polarity (+ and -).
- Do not mix old and new batteries.
- Do not mix alkaline, standard (carbon-zinc) or rechargeable batteries.
- Only batteries of the same or equivalent type as recommended are to be used.
- Do not short-circuit the supply terminals.
- Remove batteries during long periods of non-use.

1

91-004648-000 ©

- Remove exhausted batteries from the toy.
- Dispose of batteries safely. Do not dispose of batteries in fire.

RECHARGEABLE BATTERIES

- Remove rechargeable batteries (if removable) from the toy before charging.
- Rechargeable batteries are only to be charged under adult supervision.
- Do not charge non-rechargeable batteries.

Disposal of batteries and product

The crossed-out wheellie bin symbols on products and batteries, or on their respective packaging, indicates they must not be disposed of in domestic waste as they contain substances that can be damaging to the environment and human health.

The chemical symbols Hg, Cd or Pb, where marked, indicate that the battery contains more than the specified value of mercury (Hg), cadmium (Cd) or lead (Pb) set out in Battery Directive (2006/66/EC).

The solid bar indicates that the product was placed on the market after 13th August, 2005.

Help protect the environment by disposing of your product or batteries responsibly.

VTECH® CARES FOR THE PLANET.

Care for the environment and give your toy a second life by disposing of it at a small electricals collection point so all its materials can be recycled.

In the UK:

Visit www.recyclenow.com to see a list of collection points near you.

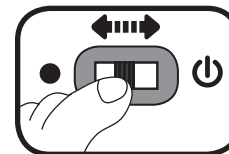
In Australia & New Zealand:

Check with your local council for kerbside collections.

PRODUCT FEATURES

1. ON/Off SWITCH

To turn the unit **On**, slide the **On/Off Switch** to the **On** (⬆) position. To turn the unit **Off**, slide the **On/Off Switch** to the **Off** (●) position.



2. AUTOMATIC SHUT-OFF

To preserve battery life, the **VTech® Toot-Toot Drivers® Cargo Train** will automatically powerdown after approximately 60 seconds without input. The unit can only be turned on again by pressing the light up button, pressing the chimney, pushing the vehicle quickly, or rolling the vehicle over SmartPoint™ locations

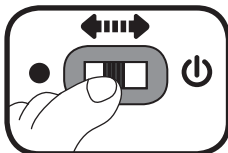
NOTE: This product is in Try-Me mode in the packaging. After opening the package, turn the vehicle off and on again to proceed with normal play. If the unit

2

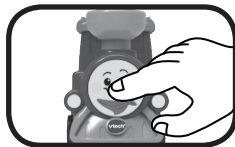
powers down while playing, install a new set of batteries.

ACTIVITIES

1. Slide the **ON/OFF SWITCH** to turn the unit **ON**. You will hear sounds, a song and a phrase. The light will flash with the sounds.



2. Press the **LIGHT UP FACE BUTTON** to hear sounds, songs, phrases and melodies. The light will flash with the sounds.



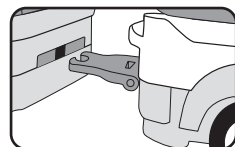
3. Push the vehicle to hear fun sounds. While a melody is playing, push the vehicle again to add in fun sounds on the top of the melody. The light will flash with the sounds.



4. For added fun, the vehicle interacts with **VTech® Toot-Toot Drivers®** tracks. Simply roll the vehicle over one of the SmartPoint™ locations to see the light flash and to hear greetings & fun sounds, short tunes and sing-along songs (Tracks sold separately).



5. The **Cargo Train** comes with a wheeled accessory that can attach to the train. Simply, connect the wheeled accessory to the back of the train. To remove the accessory piece, unhook from the train.



CARE & MAINTENANCE

1. Keep the unit clean by wiping it with a slightly damp cloth.
2. Keep the unit out of direct sunlight and away from any direct heat source.
3. Remove the batteries when the unit is not in use for an extended period of time.
4. Do not drop the unit on hard surfaces and do not expose the unit to moisture or water.

TROUBLESHOOTING

If for some reason the unit stops working or malfunctions, please follow these steps:

1. Please turn the unit **OFF**.
2. Interrupt the power supply by removing the batteries.
3. Let the unit stand for a few minutes, then replace the batteries.
4. Turn the unit **ON**. The unit should now be ready to play again.
5. If the product still does not work, replace with a new set of batteries.

If the problem persists, please call our Consumer Services Department and a service representative will be happy to help you.

CONSUMER SERVICES

Creating and developing VTech® products is accompanied by a responsibility that we at VTech® take very seriously. We make every effort to ensure the accuracy of the information, which forms the value of our products. However, errors sometimes can occur. It is important for you to know that we stand behind our products and encourage you to call our Consumer Services Department with any problems and/or suggestions that you might have. A service representative will be happy to help you.

UK Customers:

Phone: 0330 678 0149 (from UK) or +44 330 678 0149 (outside UK)

Website: www.vtech.co.uk/support

Australian Customers:

Phone: 1800 862 155

Website: support.vtech.com.au

NZ Customers:

Phone: 0800 400 785

Website: support.vtech.com.au



**Visit our website for more
information about our products,
downloads, resources and more.**

www.vtech.co.uk
www.vtech.com.au



TM & © 2025 VTech Holdings Limited.
All rights reserved.
Printed in China.
91-004648-000 ©

Product Warranty /Consumer Guarantees

UK Customers:

Read our complete warranty policy online at vtech.co.uk/warranty.

Australian Customers:

**VTECH ELECTRONICS (AUSTRALIA) PTY LIMITED – CONSUMER
GUARANTEES**

Under the Australian Consumer Law, a number of consumer guarantees apply to goods and services supplied by VTech Electronics (Australia) Pty Limited. Please refer to vtech.com.au/consumerguarantees for further information.